



Adjusting Pop-up Blocker Settings in Internet Explorer



Why do I need to adjust Pop-up Blocker?

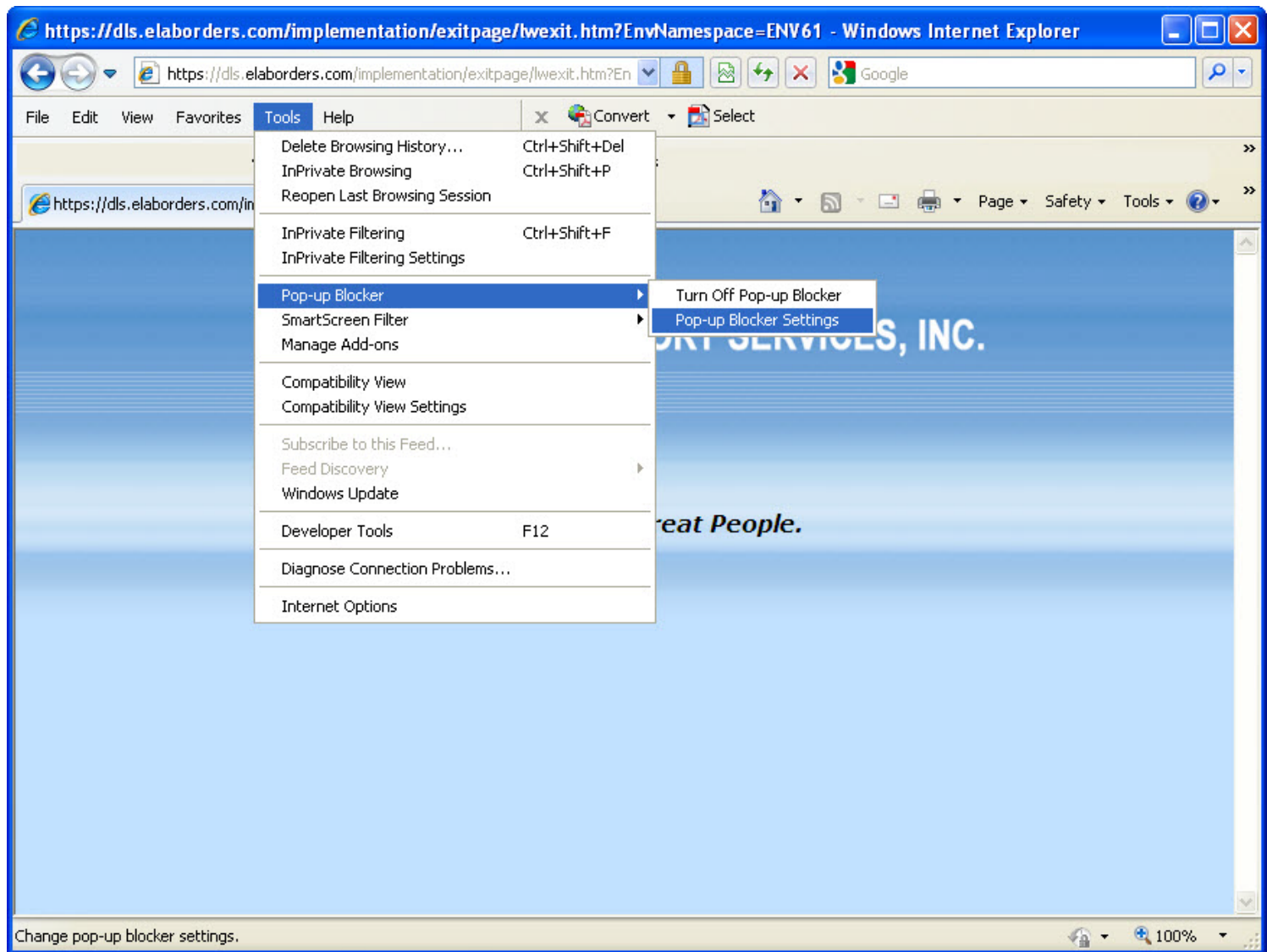
Pop-up Blocker needs to be adjusted to properly display the log-in screen.

Requirements:

Windows based PC or laptop (Windows 7, Windows Vista, Windows XP) running Internet Explorer version 6 or higher.

*Screenshots may vary depending on version of Windows and/or Internet Explorer.

1. Open Internet Explorer
2. Click Tools → Pop-up Blocker → Pop-up Blocker Settings



Adjusting Pop-up Blocker Settings in Internet Explorer

3. Type <https://dls.elaborders.com> under "Address of website to allow:".
4. Click Add.
5. Verify <https://dls.elaborders.com> appears in the "Allowed Sites:" box.
6. Click close.

